



VASUNDHARA P R I D E

2 BHK PREMIUM APARTMENTS



THE GOLDEN TOUCH OF PROSPERITY!



A MASTERPIECE IN THE MAKING



THE GOLDEN TOUCH OF PROSPERITY!

A gracious world of comfort & luxury awaits you. This picture of elegance rises above the ordinary. Enjoy morning as sunbeams dance in your living rooms, with thoughtfully planned spaces to welcome the sunrise and enjoy the sunset, in a home you will be proud to own.

Each home is designed to have plenty of natural light, ventilation and a sense of space. Your home is a perfect blend of your personality and lifestyle. Our design ensures that you can maximise the space available for you.

Immaculate design top of the line specifications and the best in the class amenities, living here is blessed with the golden touch of prosperity. 2 BHK lavish apartment spaces have been conceived to confer an affluent living experience at prime location of bawadi makes it a valuable proposition.

The superb creation will shower on you the heartfelt blessings and inspire you to flourish with the dreams in your eyes.

Enter the era of prosperity...

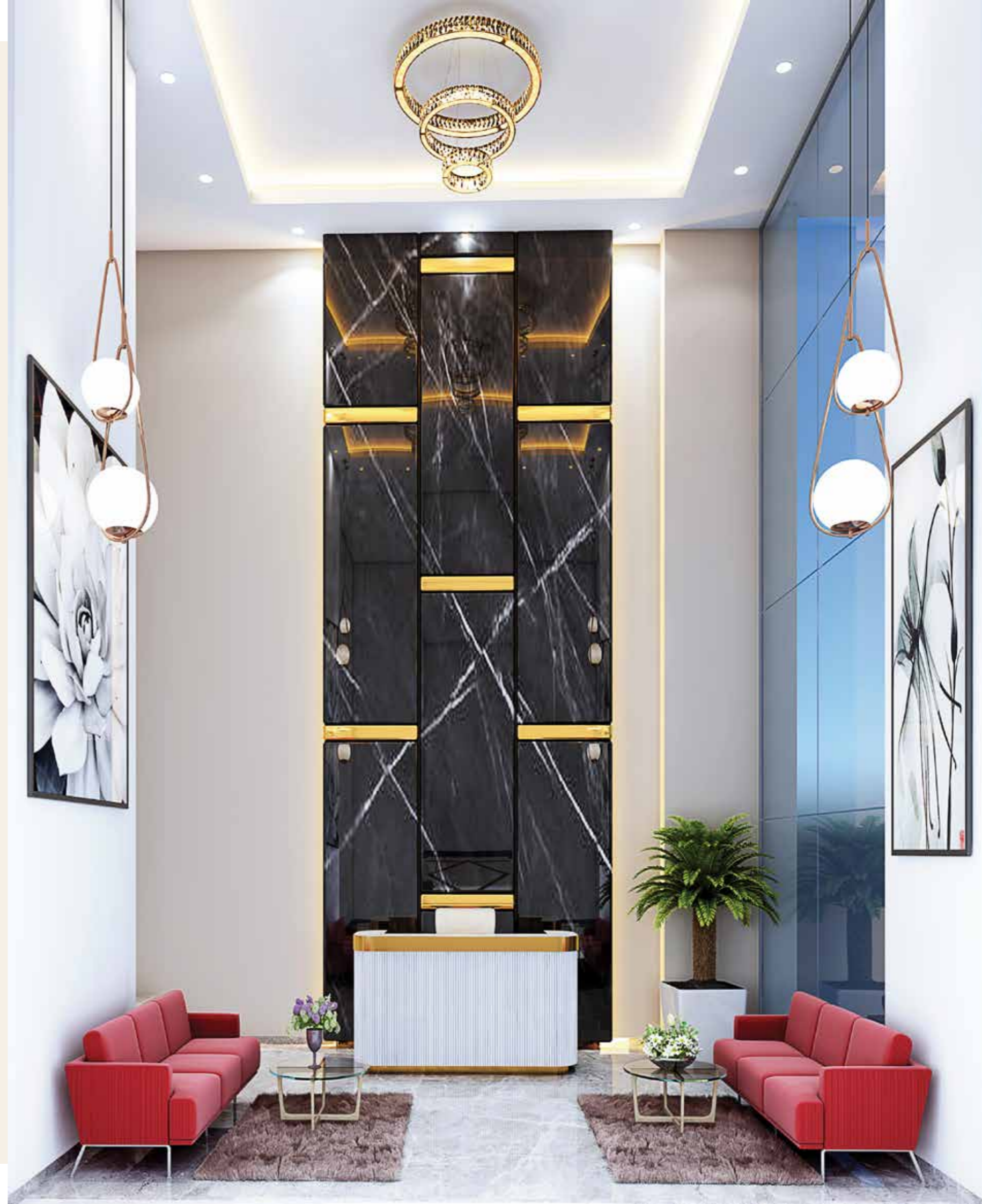
LIFE • LOCATION • CONVENIENCE • LIVING



THE GRAND ENTRANCE OF PROSPERITY!

Designer Entrance Lobby

A Journey to your home begins from the lobby. Why shouldn't the in-betweens be equally mesmerizing? A Vasundhara Pride, we have paid attention to detail. We have designed the exteriors to impress and added amenities to highly impress.



CONNECTIVITY THAT LEADS TO PROSPERITY!

SCHOOL

- Daffodil International School (10 mtrs.)
- Mitcon International School (1.7 kms.)

BANK

- SBI & Indusind Bank (700 mtrs.)
- Dena Bank (750 mtrs.)

HOSPITAL

- Asia Columbia Hospital (750 mtrs.)
- Jupiter Hospital (2.2 kms.)

SHOPPING

- Croma Store (200 mtrs.)
- DMart Baner (600 mtrs.)
- Westside (1.5 kms.)

LEISURE

- The Irani Cafe (230 mtrs.)
- Balewadi High Street (1 km.)
- Hotel Orchid (1.5 kms.)



A WORLD WHERE LIFE IS BUILT AROUND YOU

Calling it merely an advantageous location would be an understatement. Vasundhara Pride is close to the best of multi-cuisine Restaurants, Shopping Centres, Temple, world-class Hospitals and renowned Educational Institutions & Schools. It is in proximity to prime location like Aundh, Wakad, Nigadi, the IT cluster of Hinjewadi IT Park & the industrial belt of Pimpri-Chinchwad, Bhosari MIDC are located conveniently too. If you want to quick getaway from the City on weekend, event the Mumbai-Pune highway is just couple of minutes drive-away!!! Smartly connected to all the directions of Pune.





FLOOR PLAN 2ND TO 7TH FLOOR



FLOOR PLAN (TYPE 1)

Flat No.	Rera Carpet	Useable Carpet
301, 401, 501, 601, 701	59.66 Sq.M.	71.53 Sq.M.

FLOOR PLAN (TYPE 2)

Flat No.	Rera Carpet	Useable Carpet
302, 402, 502, 602, 702	58.63 Sq.M.	69.30 Sq.M.

2 BHK



FLOOR PLAN (TYPE 1)

Flat No.	Rera Carpet	Useable Carpet
301, 401, 501, 601, 701	59.66 Sq.M.	71.53 Sq.M.

2 BHK



FLOOR PLAN (TYPE 2)

Flat No.	Rera Carpet	Useable Carpet
302, 402, 502, 602, 702	58.63 Sq.M.	69.30 Sq.M.

A HOME HERE IS A BUNDLE
OF JOY **FOREVER...**



TO THE MAGIC OF HAPPINESS



PROJECT AMENITIES

- RCC Framed Structure
- Well Designed Floor Lobbies
- High Speed Automatic Lifts
- Intercom System
- CCTV Cameras for Common Areas Surveillance
- Decorative Compound Wall with Gate and Lights
- All External and Internal Wall - Bricks or ACC Blocks
- Building Exterior with sand face plaster with Texture Finish Waterproof Painting
- Power Backup for lift and Common Areas
- Wall-POP/GYPSUM for internal false ceiling
- Fire fighting system as per CFO Pune Municipal Corporation

INTERIOR SPECIFICATIONS

- Vitrified Flooring in all Rooms
- Exhaust Fan Provision in Kitchen
- Branded SS Sink
- Kitchen - Granite Kitchen Platform provided separately
- All Inner Walls with Good Quality emulsion Paint of reputed Brands

BATHROOMS AND TOILETS

- Full height tiles on walls
- Geyser provided in all bathrooms
- Concealed plumbing with reputed brand fittings
- Anti-skid tiles for Toilets
- Branded wall tiles for all toilets
- Diverter for Bath fittings
- Concealed Plumbing

DOORS AND WINDOWS

- Attractive main door with decorative handle safety chain, Biometric lock for main door
- UPVC Sliding Windows
- Branded manufacturer modular panel door for bedroom
- Marble seal for all windows
- Large window opening allowing enormous sunlight
- Full size door for dry balcony

ELECTRICALS

- Concealed PVC insulated copper wiring of reputed brands
- TV and Telephone point in living room
- AC point in all bedrooms
- Adequate inverter points
- Washing machine point in dry balcony
- All necessary Electrical points of reputed Brands in all the Rooms

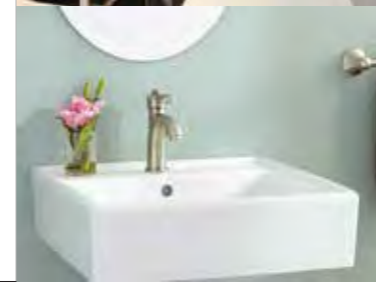


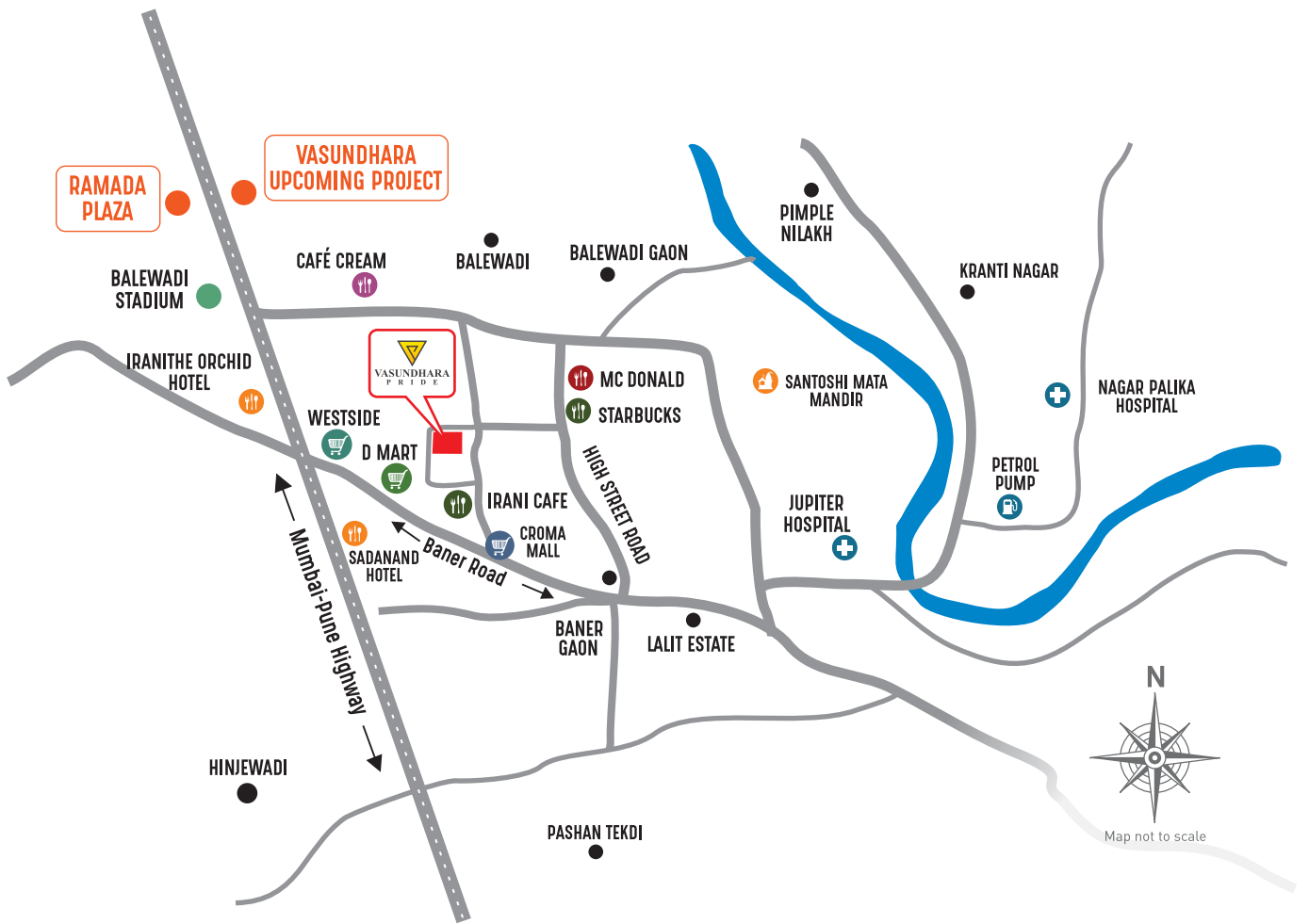
PROJECT HIGHLIGHTS

- Magnificent 7-Storeyed Landmark Project
- Located at High Street NX
- Spacious 2 Bed Residences
- Elegant Entrance Lobby
- Ample Car Parking
- 24x7 Security Solutions

LIFESTYLE RECREATIONAL

- Electronic Security System with Video Door Phone Facility
- Fitness Centre
- Cycle Parking
- Kids Play Zone
- Solar Water Heater
- Inverter Fittings in all Flats
- Seat out Area





ARCHITECT : Namdeo S. Makune, Pune | R.C.C CONSULTANT : Matrix Engineers, Pune
 LEGAL ADVISOR : Atul Patkar, Thane



Address : Plot No. 33, Sr. No. 22/9/9, Laxman nagar, Balewadi, Pune- 411045.
 Email : vasundharabuildcon1@gmail.com

For Booking : +91 99307 21234
www.vasundharabuildcon.in



Disclaimer : The developers reserve the right to amend the layout plans, number of floors, specifications, Elevation, colour scheme, amenities etc. without notice. The Plans shown are not to Scale. This brochure is for private circulation only. The Photographs, Picture, Contents etc. in this brochure are not part of the agreement to sale.